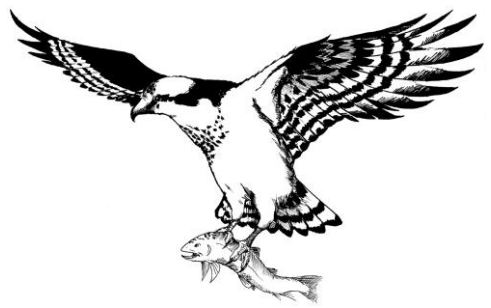


THE FISH HAWK HERALD



Coeur d'Alene Chapter of the National Audubon Society
www.cdaudubon.org

September 2015

Volume 26 Number 1

SEPTEMBER PROGRAM

DATE: September 8, Tuesday
PLACE: Lutheran Church of the Master,
4800 N. Ramsey, CDA
TIME: 7:00 p.m.
PROGRAM: "Honey Bees"
SPEAKER: Ken Crawley, a local bee
keeper



From the President

I'm looking forward to getting together with all of you at our September 8th Audubon Meeting! We've all had different adventures this summer. It will be good to catch up!

Our September speaker is Ken Crawley, a local beekeeper. Here's what he says, "This is the second winter my 'South Carolina' 3 year old hive has survived here in Idaho. I'm preparing to put a 'honey super' on that hive box in a week or thereabouts."

"As a 'hobby beekeeper' for 5 years I do not profess any expertise. When in doubt I don't intervene. My perspective will be from what a non-commercial keeper does, and what happens when you go to the emergency room TWICE for a new bee sting allergy! I'm getting my second shot today. A year

ago I bought 6 'nucleus' hives from Bob and Virginia of the 'Bee Hive' in CDA, and I captured 5 swarms in July. Coming into our 3rd spring in Idaho we only lost 4 hives to the wet winter conditions, so there are 4 hive boxes ready for swarm captures, and 8 hives are working hard. The local bee expert Bob says this should be one of the best years for honey for the past 20 years after the 1980 Mount St. Helens volcano eruption killed off bees."

This should be a great program. There may be honey to purchase. Be sure to come! I'm also open to ideas for future programs. Let's hear what you know about.

See you soon. Eula Hickam

Email Notices



I keep an Audubon email group contact list for the purpose of sending out messages about upcoming meetings, field trips, interesting bird sightings and any other information that I think might be of interest to our Audubon Chapter.

Many of you are already on the group email list and so you need not respond unless you want to be deleted from the list. If you want to be added to the group email list, email me at shirley.sturts@gmail.com and request to be added. Thanks, Shirley Sturts



Membership Reminder Pay your local chapter dues THIS Month!

In fall 2012, Coeur d'Alene Audubon began collecting annual dues for our local Chapter membership for the first time. These donations help sustain our mission statement to support and protect Idaho's wildlife. As a 501(c)(3) organization any contributions are tax deductible. Payment is due each September to cover the fiscal year - August through July.

As of this date we have 102 members that are active in our chapter. There are MANY areas in which a member can participate but ALL members should support this chapter through the payment of dues. Only **FOUR** of our **102** members are paid up past September 1, 2015. **Everyone else is due at this time.** Dues are \$10/year for individuals and \$15/year for a family. Please use the "cut-out" on the back page of this newsletter and submit payment to:

CDA AUDUBON CHAPTER

P.O. Box 361

Coeur d'Alene, ID 83816

If you have questions regarding your membership status, please contact Peggy

Albertson at fourseasonscards@yahoo.com

Or 664-1616

Thanks!

Past Newsletters Indexed

This was project done by Keith Sturts. Working a little bit each day over several months, he scanned all the past newsletters, November 1990 to the present, and then indexed them. The links to the newsletters and the link to the index can be found under "Newsletters" on our Website: <http://cdaudubon.org/Newsletters.html>

I hope you will take the time to browse the index. I think you will find some articles that will be of interest to you. In my own browsing, I came across an interesting article by one of members, Dick Cripe, that I'm sure I read before. The title of the article is "A Red Cross Volunteer, His Story". It has nothing to do with birds but I know you will find it interesting. This past May some of you went of a field trip to the City of Rocks and met a former member of our Chapter, Wallace Keck. Before becoming the manager of the City of Rocks National Reserve, he was a ranger at Farragut State Park. At his first Audubon Chapter meeting, we were able to persuade him to become our Conservation Chair. There are several articles by Wallace listed in the Index. I will highlight more articles in future newsletter.

There are bound to be errors in such a huge project as this. Please let Keith know of any corrections that need to be made. Keith36@outlook.com

Birds and Beans

George Saylor



Once again, the Coeur d'Alene Audubon Society is selling Birds and Beans shade grown, organic, fair-trade certified coffee. We do it as a fundraiser and to help protect bird habitat in Central America.

I am now taking orders. Go to our Website of prices and varieties available. Help save the rain forests choosing to drink shade grown coffee

<http://cdaudubon.org/Birds%20and%20Beans.pdf>

April-June Field Trips

I'm sorry there was not room to publish these three field trips in our September Newsletter. Please read about the field trips and view photos on our Webpage under "Projects" - scroll to the bottom of the page.

<http://cdaudubon.org/projects.html>

- April 24-26 - Walla Walla Bird and Wine
- May 14-18, 2015 - City of Rocks National Reserve and Castle Rocks State Park
- June 6, 2015 - Bonner County Century Count

White House Sparrow One in a Million

Article and photo by Richard Fife



I first sighted a white sparrow near my house in Gannett, ID in late August 2014. The bird was in flight as I snapped a quick photo. I never expected to see the bird again but on March 23, 2015, this beautiful critter came to our front yard feeder and posed as I took several photos. Note that the beak and feet are pale yellow while the eyes retain their normal black pigmentation. Rather than being albino, the bird is leucistic.

Leucism is a condition in which there is partial loss of pigmentation in an animal resulting in white, pale, or patchy coloration of the skin, feathers, hair, scales or cuticle, but not the eyes. Unlike albinism, leucism is caused by a reduction in multiple types of pigment, not just melanin.

Conservation Report: Midge Marcy-Brennan

Boulder-White Clouds Wilderness



On Friday, August 7, 2015, President Barack Obama signed the Boulder-White Clouds wilderness bill. This bill creates three new wilderness areas east of Stanley, Idaho, totaling 431 square miles. At the signing in the Oval Office, Obama stated, "I think everybody here knows that one of the prettiest states we have with some of the greatest national treasures is the great state of Idaho... This is a remarkable area. It is used by fishermen, hunters, rafters, and people taking hikes. It is not only beautiful, but it's also an important economic engine for the state — attracting tourism, creating jobs."

The Hemingway-Boulders Wilderness (106 square miles) and the White Clouds Wilderness (142 square miles) will be managed as part of the Sawtooth National Recreational Area. The 183-square-mile Jim McClure-Jerry Peak Wilderness covers 145 square miles of national forest land and 37 square miles of BLM land on the east side of

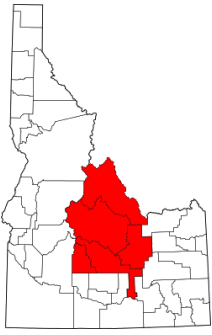
the White Clouds. Each agency will continue to manage its portion.

Four wilderness study areas of BLM land on the east side of the East Fork of the Salmon River, just north of the Jim McClure-Jerry Peak Wilderness, are released to multiple use. Those are the Jerry Peak West Wilderness Study Area, the Corral-Horse Basin Wilderness Study Area and the Boulder Creek Wilderness Study Area. Along with Forest Service-recommended wilderness not included in the wilderness bill, they total 242 square miles. That's 36 square miles more released from Simpson's original Central Idaho Economic Development and Recreation Act, whose released areas totaled 206 square miles.

The passage of the wilderness bill through the Republican dominated Congress was motivated by the potential of a presidential national monument proclamation which could have covered twice as much land.

The compromise legislation was supported by motorized users. "We worked very closely with Congressman Simpson to draw those boundaries so that all the snowmobile and motorcycle areas would not be included," said Sandra Mitchell, executive director of the Idaho Recreation Council. But Lynne Stone, executive director of the Boulder-White Clouds Council, a local conservation group, called passage of the bill

Continued on page 5



Boulder-White Clouds Wilderness

Continued from page 3

"bittersweet," saying it gave up too much territory to motorized use. She said that even though trails in the heart of the White Clouds are closed to motorcycles and mountain bikes, those uses will be allowed on the initial parts of those trails.

Also under the new law, grazing on wilderness land will be allowed to continue on 700,000 acres of the area. Because of this, the Sagebrush Habitat Conservation Fund and other private foundations are willing to pay grazing permittees in exchange for their voluntary retirement of the grazing permits.

In testimony before the House Subcommittee on Federal Lands, the Forest Service supported designation of the wilderness areas. According to a press release from the Salmon-Challis National Forest, most of the national forest land designated as wilderness was recommended for wilderness designation in forest management plans dating as far back as 1987.

HISTORY

In 1968 hikers and backpackers saw mining exploration equipment and drill rigs on Castle Peak in the White Cloud Mountains. In September of that year ASARCO (American Smelting and Refining Company) said there

was a major molybdenum deposit 400-600 feet below the surface of the mountain, 2 percent moly and 98 percent waste. The mountain would be blasted and bulldozed into an open pit 7000 feet long, 700 feet wide and 600 feet deep. Mine waste and spoil would go into a two mile long tailings pond in the Little Boulder watershed.

Conservationist Ernie Day, Boise, helped lead the four-year battle against the mine and recalls: "The enormity of ASARCO's proposal in the late 1960's to put a huge open pit moly mine at the base of perhaps Idaho's most beautiful peak, Castle Peak in the White Clouds, caused a real uproar among Idaho citizens."

Idaho Governor, Don Samuelson, defended the mine as did Challis residents, saying, "The good Lord never intended us to lock up our resources." Governor Samuelson also said at a Western Governors' Conference that the Forest Service was the source of the problem: "If they had gone ahead and issued the permit, there would have been no controversy".

Over the next four years debate continued. In 1970 Idaho's Congress proposed a 750,000 acre national park for the Sawtooths, White Clouds and Boulders areas. Cecil Andrus opposed the ASARCO mine and this added fuel to his campaign with which he defeated the incumbent Samuelson. Governor Andrus and Idaho Senator Frank Church worked for the next

Continued on page 6



Boulder-White Clouds Wilderness

Continued from page 5

two years to protect the area, and the proposal of national recreation area won out over the option of forming a national park.

1972 -Sawtooth National Recreation Area was created. Mining Castle Peak was stopped. But White Clouds was prevented from receiving full protection from the mining industry and its political allies. Instead, the White Clouds became a Congressionally-designated Wilderness Study Area and a mineral review was ordered. The intent was that once the mineral survey was done, the area could be eligible for wilderness legislation.

Since 1972 there have been several attempts by conservationists to pass wilderness legislation for the Boulder-White Clouds area, including 1983, 1986-87, 1993-94, 2006, and 2010.

Rep. Mike Simpson introduced a wilderness bill in 2010 but it was killed by resistance from Senator Jim Risch. So Former Interior Secretary and Idaho Gov Cecil Andrus wrote to President Obama and asked him to use the Antiquities Act of 1906 to force action on the Boulder-White Clouds. And in 2013, when it was clear that Simpson's bill still had no chance, Conservation League Director Rick Johnson and other conservation partners such as Craig Gehrke of the

THE FISH HAWK HERALD

Wilderness Society shifted their support to Andrus' national monument proposal. By September 2014 they had built a huge coalition of supporters.

In the face of the possible national monument proposal that would include a much larger section of land, Mike Simpson was joined by Jim Risch and developed a new bill that left all of the motorized trails and snowmobile areas intact, slicing tens of thousands of acres off his 2006 and 2010 bills. Rick Johnson testified at a hearing in May endorsing the bill, but only after he said he would drop his monument campaign if Simpson's bill passed. "If I hadn't made that commitment already, I wouldn't have been invited to testify", Johnson said.

The bill passed unanimously by the U.S. House of Representatives on July 27th, but getting it through the Senate was another matter. There was much political finagling which begin with Jim Risch talking to everybody who placed holds on the bill, one specifically Senator Ted Cruz. In its final hours that Tuesday, the bill passed the Senate unanimously.

Simpson and Johnson, on that Friday, were standing in the bill-signing crowd along with others who had traveled the long road since Simpson first addressed the Idaho Conservation League's Wild Idaho gathering in 1999, and flew over Castle Peak in the White Clouds. Simpson told Obama that

Continued on page 7

Boulder-White Clouds Wilderness

Continued from page 6

Johnson has worked to protect the area for 30 years. "Personally?" Obama said. "This must be a big day for you."

Sources: *Barker, Rocky. "How the Boulder-White Clouds Wilderness was preserved", August 7, 2015, Idaho Statesman. Retrieved from rbarker@idahostatesman.com.*

and "Boulder-White Clouds Wilderness" goes into effect", August 18, 2015, *Idaho Mountain Express. Retrieved from Boulder White Clouds Council Website. www.wildwhiteclouds.org.*

MEETINGS/EVENTS 2015-2016

Our chapter holds a general meeting each month, September through June. We have a guest speaker at our regular meetings. The meetings are open to the public, and provide a good introduction to our group for prospective members. We meet the 2nd Tuesday of each month at 7:00 p.m.. at the Lutheran Church of the Master on the NE corner of Kathleen and Ramsey. Please check our website for any last-minute changes. Our June meeting is a picnic. www.cdaudubon.org

Board Meetings are held once a month at 4:30 P.M. the first Tuesday of every month at the church.

Adopt-A Highway Fall Cleanup

Date: October 10, Saturday **Time:** 8:00 a.m.
Place: Grab your gloves and join us at the Mica Grange building for the semi-annual highway cleanup. Refreshments will be served starting at 8:00 a.m. and will begin cleanup about 8:20 a.m. Depending on the turnout, we are usually done by 11:00 a.m. Collection bags are provided by IDOT and pick-up sticks are furnished by Audubon.

There will be a sign-up roster at the September monthly meeting as IDOT requires signatures prior to the event. Any questions contact Judy Waring 765-5378.

Thanksgiving Day Count

<http://www.utahbirds.org/cbc/ThanksgBirdCount.htm>

Project FeederWatch

<http://feederwatch.org/>

Yard Lists

January 1st - Time to turn in your personal Yard List totals for 2015 to: Doug Ward, dougward@frontier.com and to start your 2015 list.

Great Backyard Bird Count

February 12-15, 2016

<http://gbbc.birdcount.org/>

John James Audubon Birthday

April 26

Kootenai Environmental Alliance

Noon meetings at the Ironhorse Restaurant the 1st Thursdays of each month, running Sept. through June. Check their home page for information <http://www.kealliance.org>

Or call the office at 667-9093, or email KEA at kea@kealliance.org.

Field Trips 2015-2016

Please Register: Watch the website or newsletter for updates to our field trip schedule. Additional field trips will be added if we have volunteers to lead them

Please contact our field trip coordinators Janet Callen 664-1085 and Roland Craft 457-8894 to suggest or volunteer to lead a trip. Participants should contact the trip leader at least 24 hours in advance of the field trip to find out if the meeting place/time or destination has been changed. Participants will share in a mileage reimbursement for the driver

Slavin Ranch

Date: September 5, Saturday 2015

Time: 8:00 a.m.

Meet: South side of K-Mart parking lot

Leader: Judy Waring 765-5378

Target Birds: Shorebirds and migrating songbirds. This will be a full day trip. Dress for the weather and bring a lunch and water.

Mica Bay Survey

Date: September 8, Tuesday (held 2nd Tuesday of each month - times vary depending on month)

Time: 8:00 a.m.

Meet: Fairmont Loop and Highway 95

Leader: Shirley Sturts 664-5318 and Janet Callen 664-1085

Activity: We spend about 3 hours once a month counting birds at Mica Bay. Beginner birders are welcome. We will help you with identification skills.

Bird Aviation Museum and Invention Center & Gamlin Lake

Date: September 19, Saturday 2015

Time: 8:00 a.m.

Meet: K-Mart parking lot, south side.

Leader: Roland Craft 457-8894

We will walk the trail at Gamlin Lake and then visit the museum. The museum has a a café, and, depending on what the group decides, we may eat there. Bring snacks just in case. (at least a 3/4 day trip)

Heyburn State Park

Date: _ October 3, Saturday 2015

Meet: K-Mart parking lot, south side

Time: 8:00 a.m.

Leader: Roland Craft 457-8894

We will hike the bike trail and perhaps other trails depending on time and then visit Chatcolet Lake. We will look for both land birds and waterfowl. Bring lunch and wear hiking apparel.

Mineral Ridge Hike: Fernan Lake, Wolf Lodge, Beauty Bay and Blue Creek Bay:

Date: November 14, Saturday 2015

Time: 9:00 a.m.

Meet: Fernan Ranger Station

Leader: Janet Callen 664-1085

This will be a three-quarter day trip. Bring a lunch, or snacks and water. Dress for the weather. We'll hike Mineral Ridges and search for waterfowl, targeting loons.

Rathdrum Prairie Hawk Survey

Surveys will take place once a month from November through March. Doug Ward has been the leader. This two hour fast-paced journey across the prairie is a learning experience that is a lot of fun. Details will follow.

Continued on page 9

Field Trips 2015-2016

Continued from page 8

Christmas Counts

December 14, 2015 through January 5, 2016. Three separate counts will take place: Coeur d Alene, Spirit Lake, Indian Mountain. Details will follow.

Pend Oreille River, Lake and Priest River

Date: February 6, Saturday 2016

Time: 8:00 a.m.

Meet: K-Mart parking lot, south side.

Leader: Bill Gundlach 755-2378

This will be a full-day trip. Bring lunch and water. Target birds are primarily waterfowl and eagles.

Lincoln County Winter Bird Trip

Date: February 20, Saturday 2016

Time: 8:00 a.m.

Meet: K-Mart parking lot, south side.

Leader: Roland Craft 457-8894

Target Birds: Snowy Owls, Horned Larks and other winter birds. This will be a full-day trip. Bring lunch and water. We will travel the roads in the Davenport area in search of winter birds including Great Horned and Snowy Owls, Horned Larks and Snow Buntings.

Help Wanted! Someone to lead a trip or two in March

Turnbull Beginning Birdwatching Class:

Date: Tentative Early April 2016

Time: To be determined

Meet: To be determined

Leader: Janet Callen

These classes are held at Turnbull from 9:00 a.m. to 11:00 a.m. We will provide transportation and entry fee for the vehicles. The class will include a tour of the Refuge.

Malheur Wildlife Refuge:

Date: April 28, Thursday through May 1st. Sunday 2016

Time and Meet: To be determined

Leader: George Saylor 664-2787

Target Birds: Migrating waterfowl and songbirds. The refuge has recorded 320 bird species and 58 mammal species. More information: www.fws.gov/refuge/malheur

Phillips Farm/Genesee Sewage Lagoon

Date: May 7, Saturday 2016

Time: 8:00 a.m.

Meet: K-Mart parking lot, south side.

Leader: Janet Callen 664-1085 We will be looking for spring arrivals, shorebirds in Genesee. If time permits, we'll visit the U of I Arboretum and stop at the Tensed sewage pond. This will be an all day trip. Bring lunch and appropriate clothing.

Ball Creek Nature Conservancy

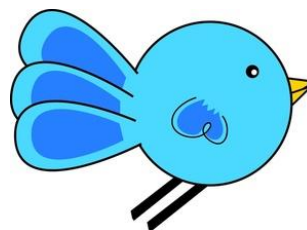
Preserve and Boundary Creek WMA

Date: May 20-21, Friday-Saturday 2016

Time and Meet: To be determined.

Leader: Kris Buchler 664-4739

Target Birds: Long-billed Curlews, Boreal Chickadees, and hermit Thrush. We will stay overnight at the Selkirk House, and bird the area the next day.



June 2016 will be a Century Count in Kootenai County. Details will follow.

NEW MEMBER APPLICATION

Become a member of the National Audubon Society, Join online at www.audubon.org or use this form.

INTRODUCTORY MEMBERSHIP

- Regular \$20.00
- Two Years \$30.00
- Seniors and Students \$15.00

NAME _____

ADDRESS _____

CITY _____

STATE _____ Zip _____

Send this application and your check payable to:

NATIONAL AUDUBON SOCIETY
Membership Data Center
P.O. Box 422248
Palm Coast, Florida 32142-6718

C9ZG060Z

CDA Audubon Chapter Officers

President:
Eula Hickam 661-3228
Vice President:
George Sayler 664-2787
Recording Secretary:
Valerie Zagar 819-5115
Treasurer:
Janet Callen 664-1085
Board Members: all officers +
Peggy Albertson, Midge-Marcy Brennan, Darlene Carlton, Carrie Hugo, Jim Lynn, Lynn Sheridan

COMMITTEE CHAIRS

Publicity: Ppen
Field Trips: Roland Craft 457- 8894
Janet Callen 664-1085
Education: Barbara Christofferson 667-3931
Conservation: Midge Marcy-Brennan
Membership: Peggy Albertson 664-1616

Hospitality: Darlene Carlton 691-6160
Newsletter: Shirley Sturts 664-5318
Mailing: Peggy Albertson 664-1616
Webmaster: Shirley Sturts 664-5318
Historian: Open

LOCAL MEMBERSHIP DUES

- Individual \$10.00
- Family \$15.00
- Individual \$25.00 - with hard copy of the newsletter
- Family \$30.00 - with hard copy of the newsletter
- Additional donation _____

Total \$ _____

NAME _____

EMAIL _____

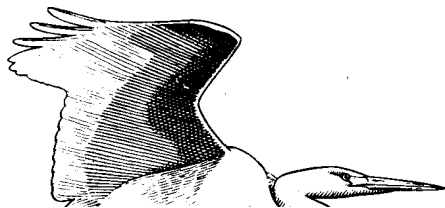
ADDRESS _____

CITY _____

STATE _____ ZIP _____

TELEPHONE _____

Mail this form and your check payable to: **Coeur d'Alene Audubon Chapter**
c/o Membership
P.O. Box 361
Coeur d'Alene, ID 83816



National Audubon Coeur d'Alene Chapter
P.O. Box 361
Coeur d'Alene, ID 83816

